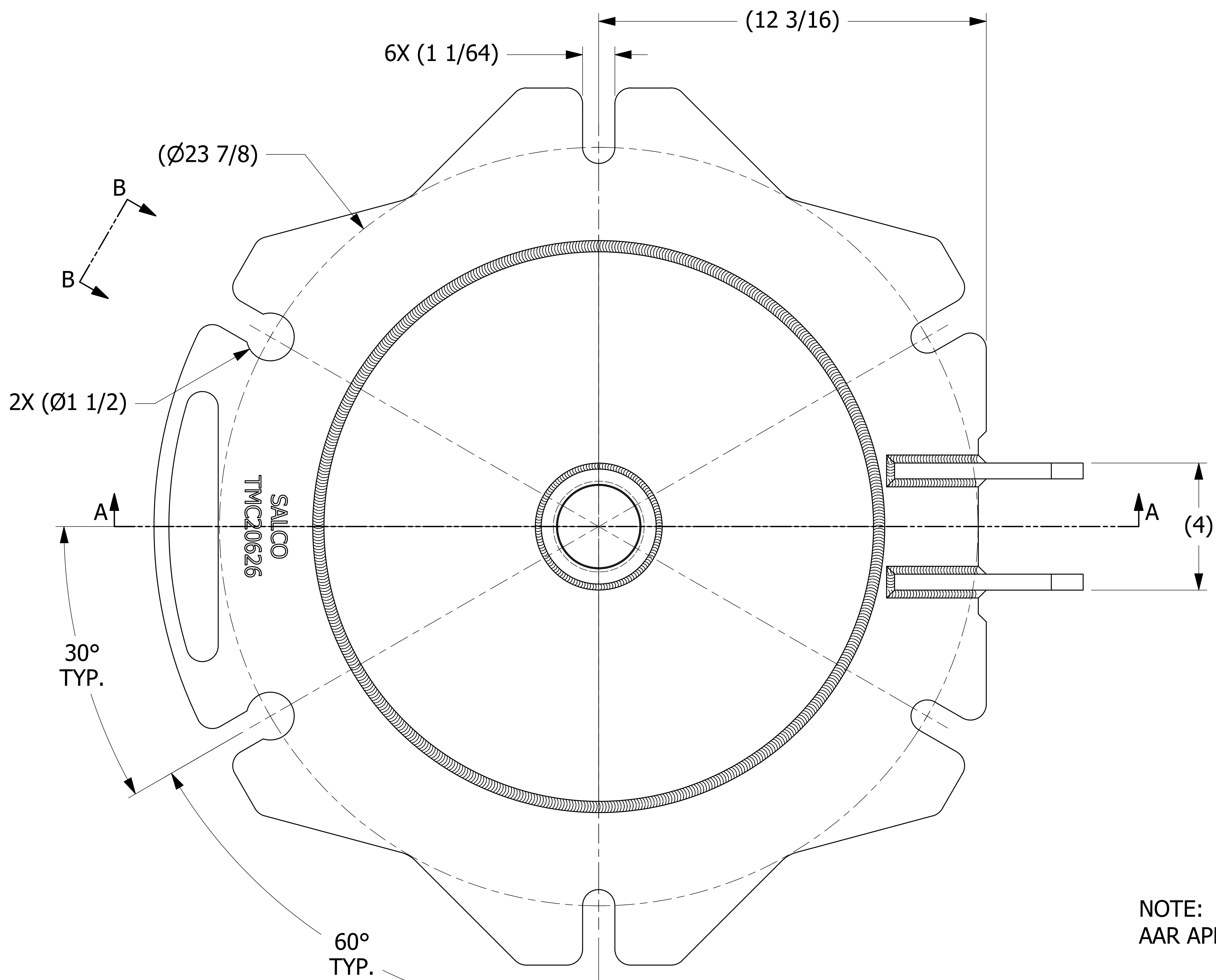
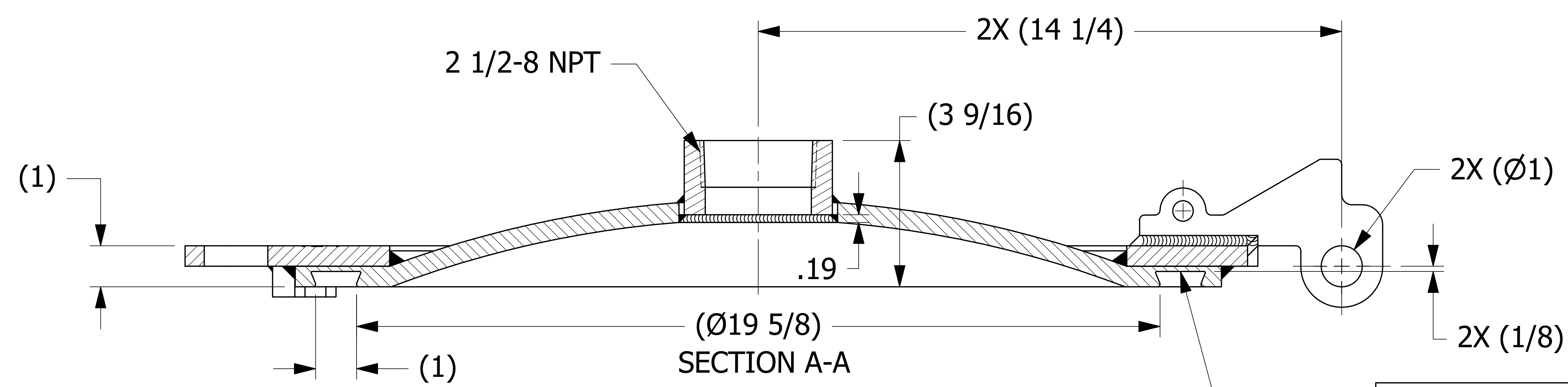


SALES DRAWING SALES DRAWING SALES DRAWING

SALES DRAWING SALES DRAWING SALES DRAWING



NOTE:
AAR APPROVAL # E-182114.



AAR #1 STYLE
GASKET GROOVE

K	WEB	4-4-19	REMOVED QAP4A-1 NOTE; Q-2.15.7 WAS QAP4C-1; D-008 WAS DSS 12; ADDED D-005 NOTE; AAR # WAS E-089005
J	RJP	11-27-17	HINGE WELD WAS 3/8"; ADDED NOTE 6; ADDED "SALCO" TO ENGRAVING
I	RJP	4-7-17	TMCDR20626 WAS TMCD206S6 & TMCD25S6MF02; HALF COUPLING UNDERSIDE FILLET WELD WAS GROOVE WELD; (3 9/16) WAS (3 3/8); REMOVED 4X .69, (12 13/64), QAP5A-1 NOTE, & 4X (11 61/64); ADDED 4X .55, (11 15/16), 2 1/2-8 NPT, .19, & LOT CONTROL NOTE
H	JG	1-15-16	REPLACED TMCHS4TR W/ B41297
G	WEB	2-25-15	ADDED SURFACE FINISH TO GASKET GROOVE
F	SMA	10-29-10	ADDED NOTE #5 & HEAT/LOT NOTE
E	CHL	7-26-11	REPLACED TMCD2026S6MF & TCN25S62 W/ TMCD25S6MF02 & CPLGH212S63000
D	CHL	7-25-11	ADDED VIEW D & DIM 3/4" TO A29293
C	CHL	11-1-10	UPDATED NOTES, REPLACED A14392 W/A29293, UPDATED WELD SYMBOL, ADDED PART NUMBER TO RING SURFACE
B	CHL	5-27-08	UPDATED NOTES & ADDED VIEW C
A	AJB	5-3-06	UPDATED NOTES
REV	BY	DATE	DESCRIPTION

UNLESS OTHERWISE SPECIFIED DIMENSIONAL TOLERANCES FRACTIONAL: ±1/16 X.XX: ±.03 X.XXX: ±.015 ANGULAR: ±1° DEBURR ALL SHARP EDGES. ALL MACHINED SURFACES TO HAVE A 125 RMS FINISH UNLESS NOTED OTHERWISE.	DRAWN BY: CHL
THIRD ANGLE PROJECTION	CHECKED BY: ACC
	PROTOTYPE BY: CHL
	PROTOTYPE DATE: 7/25/2002
	APPROVED FOR PRODUCTION BY: ACC
	PRODUCTION DATE: 11/19/2002

SALCO PRODUCTS, INC.

PART NAME: **MANWAY COVER 20" 6-BOLT**

MATERIAL: **316L SS**

PROJECT #: **020304** SHEET #: **1 OF 1** SCALE: **2:3**

DRAWING #: **E17142** PART #: **TMC20626**

THIS PRINT, PROPERTY OF SALCO PRODUCTS INC. CONTAINS PROPRIETARY INFORMATION AND MUST NOT BE COPIED, REPRODUCED, OR USED DETRIMENTALLY TO OUR INTEREST.